



National Diploma in Dental Nursing

Classroom Learning Programmes



www.tempdent.co.uk

Course Overview

The NEBDN National Diploma in Dental Nursing is a General Dental Council (GDC) recognised dental nursing qualification which covers all outcomes described within the GDC Preparing to Practice document. The purpose of the qualification is to prepare trainee dental nurses in the foundations of dental nursing so they can demonstrate the highest standards in terms of knowledge, skills and professional attributes.

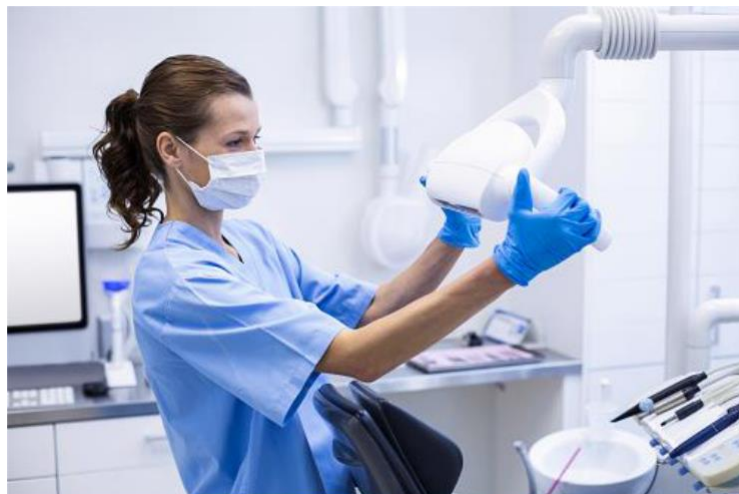
The skills you will gain upon completion of the qualification are described within the extensive curriculum under the domains of Clinical, Communication, Professionalism and Management and Leadership.

The qualification comprises of a formative workplace assessment, the Record of Experience, which enables the workplace team to become an integral part of the training of the trainee dental nurse.

The summative assessment comprises a written and practical component aimed at assessing knowledge and decision making to demonstrate trainee dental nurses' understanding and competence. The summative assessment also adheres to current educational best practice.

Candidates must be employed as a dental nurse before starting this course.

Once enrolled we offer support for candidates who are not yet employed as dental nurses to find an appropriate job placement to support you to complete the qualification.



Course Structure

Learners must be working a minimum of 16 hours a week in order to complete the course.

National Diploma

Learners are required to attend classes fortnightly on a Saturday where they will be tutored by one of our many experienced GDC registered Tutor. Learners complete a Record of Experience (a portfolio that is completed by yourself and your employer) for entry into the examination.

The course ends in a final written examination which is held in April and November each year, and the candidates that pass this written examination will be invited to the OSCE's which are held every January & June where your practical and oral skills are assessed.

The awarding body for the National Certificate is the National Examining Board for Dental Nurses (NEBDN) and Tempdent is an accredited NEBDN training centre.

National Diploma Revision Classes

Tempdent also deliver National Diploma revision classes for nurses who have previously sat the exam but have failed. Individual modules are delivered separately, so you only need to attend the sessions for the parts you need to retake.

Start Dates

- January
- June

Entry Requirements

No formal qualifications are required however you will need to pass a literacy and numeracy assessment in order to enrol onto the course.

Enrolment Process

We run weekday enrolments at our training centre in Finchley Central, North London. This include a literacy & numeracy assessment. Those with dental nurse experience will also have to complete a dental questionnaire to assess their level of knowledge if they are applying for a dental nursing qualification. You will also complete an application form. You will need to bring your C.V, National Insurance Number, passport & payment with you.

We have limited spaces on each enrolment so please contact us for available dates, so that we can book a place for you. For experienced dental nurses who are working in practice we are also able to run 1:1 enrolments for you at your convenience.



North London Centre

4 Cadbury Close,
Whetstone,
London,
N20 9BD

Tube: Totteridge & Whetstone (Northern Line) - turn left as you exit the station on to Totteridge Lane. Take the first left on to St Margaret's Avenue and when you reach the end of the road turn left on to the High Road. Northway house is on your left. The entrance to Cadbury Close is on the left just past Angle House Orthodontics. Tempdent are located at the very end of the pedestrian walkway.

Overground: Come out of Oakleigh Park train station on to Oakleigh Park North and immediately cross the road and walk down Chandos Avenue until you reach Whetstone High Road. When you reach the High road cross the road and turn right. Northway house is on your left. The entrance to Cadbury Close is on the left just past Angle House Orthodontics.

Buses: 125, 234, 263, 383, 626, 634

Benefits

All successful learners are eligible for GDC registration as a dental nurse upon completion of the portfolio and achievement of the written and practical examinations.

- Provides dental nurses with a professional qualification and career path.
- Dental nurses can then progress onto post GDC registration courses such as the Oral Health Education, Dental Radiography and Sedation.
- The course creates an opportunity to progress into teaching, assessing or dental hygiene & therapy careers.

Syllabus

- Health & safety and infection control in the workplace
- Medical emergencies
- Dental radiography
- Legislation and ethics
- Dental and general anatomy
- Dental disease – cause, diagnosis and prevention
- Dental check-ups, treatment planning and actual treatments
- Patient care and management
- Dental drugs, materials instruments and equipment

How do I apply?

You can apply for this course by;

- Apply through our website:
<https://www.tempdent.co.uk/training/dental-nurse-training-courses>

- Email us at info@tempdent.co.uk
- Phone our training team on 020 8371 6700
- Apply through our website:
<https://www.tempdent.co.uk/training/dental-nurse-training-courses>
- Email us at info@tempdent.co.uk
- Phone our training team on 020 8371 6700

Course Fees

Type of Course	Course Fee	NEBDN Exam Fee	Course Length
National Diploma in Dental Nursing	£1350 + VAT	£485	12 months

In order to secure your place on the course, and before we will engage in helping you to find a job you will be required to pay a deposit of no less than £600 +vat (£720 inclusive)



Get in Touch



Facebook/tempdent



Twitter/tempdent



LinkedIn/Tempdent recruitment & training



Head Office
4 Cadbury Close,
Whetstone,
London,
N20 9BD

Tel: 020 8371 6700
Email: info@tempdent.co.uk
Web: www.tempdent.co.uk